

Company Overview

Bizresolve is an Australian software development and managed services company that provides innovative and scalable technical solutions. Using industry best practices, Bizresolve deliver business value to our customers, on-time and on-budget, increasing the return of their IT investments.

Right from the start of a project we work closely with each customer to understand the business strategy that is driving the project, what the customer wants to deliver and what functionality the system must provide to be successful. With a strong and highly skilled development team we are able to turn any requirements into a highly cost-effective solution. A solution that meets the needs of the business and exceeds the customer's expectations. With proven delivery expertise across a wide variety of projects we consistently deliver optimal solutions.

Products & Services

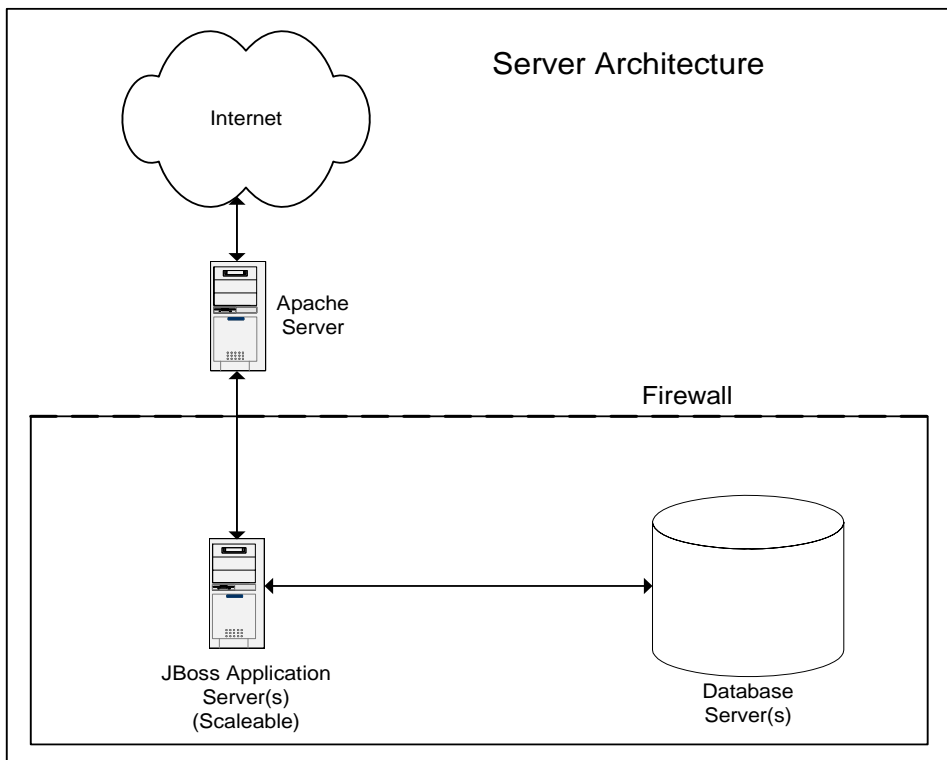
Our products and services encompass:

- Web Solution Engineering & Support
- Mobile Messaging and Transactional Development
- Software Engineering
- Managed Services

Our Technologies

The combined knowledge of the Bizresolve project team encompasses a broad range of technologies including VB6, ASP.NET, C, Oracle, SQL Server and Java. Our preferred technologies and platforms consist of:

- Application: Java - J2EE, Struts, JDBC, JUnit, XML
- Database: SQL Server
- Interface: JSP, XHTML, AJAX, DHTML
- Application Server: Jboss 4
- Web Server: Apache 2
- Operating System: Windows Server 2003



Our Process

To successfully deliver projects, Bizresolve have adopted GRAPPLE (Guidelines for Rapid Application Engineering) as our in house methodology. GRAPPLE is an adaptable set of guidelines that allow us to formulate the best fit approach depending on the nature and size of the project. GRAPPLE is a UML based object oriented methodology.

On commencement of each project, we work with our clients to determine the best approach for the project by selecting actions from the following guidelines. The emphasis on analysis and design actually streamlines the development process.

Requirements Gathering

Actions: Business Process Identification, Domain Analysis, Cooperating Systems Identification, System Requirements Identification

Overview: This segment allows us to understand exactly what the client wants and allows us to communicate that back to the client.

Requirements gathering involves working closely with the decision makers and users in order to understand the current business processes and environment, ultimately determining the requirements of the new system.

May involve a JAD (Joint Application Development) session between the project team, decision makers and users.

Outputs: Activity Diagrams, high-level Class Diagrams, Deployment Diagram, Package Diagram

Results: The outputs and a more accurate cost estimate are presented to the client for approval.

Analysis

Actions: System Usage, Use Case & Class Analysis, Object state change and Interaction Definition, Cooperating Systems Analysis

Overview: This segment involves drilling down into the results of the Requirements segment in order to increase Bizresolve's understanding of the problem. At this point, the project team defines and refines the Use Cases and Class diagrams and analyses the sequence of steps in each use case.

At this point a detailed analysis of the cooperating systems is performed. This determines the required communication and architecture for any integration.

This may also involve a JAD session with the users.

Outputs: Use Case Diagrams, Class Diagrams, Sequence and Collaboration Diagrams, Deployment Diagrams, Logical Entity Relationship Diagrams

Results: An in-depth understanding of the required solution has been gained.

Design

Actions: Object and Component Diagram Development, Deployment Planning, User Interface Design/Prototyping, Test Case Design

Overview: In this segment, the project team designs the actual solution. The outputs of this segment define the basis for much of the coding in the Development segment.

During this segment the user interface will be designed and prototyped. This normally involves another JAD session with the users to develop paper based prototypes of the screens to correspond with the use cases.

These can then be turned into a Whitesite prototype.

Outputs: Object and Activity Diagrams, Component Diagrams, Deployment Diagram, Physical Entity Relationship Diagrams, Test Cases, Whitesite.

Results: The required solution has been designed and is ready to go into development. This assists the developers in creating the system quickly and smoothly.

Development

Actions: Coding, Test Coding, User Interface Development, Documentation, User Acceptance Testing

Overview: This segment involves developing the solution to specification by creating the necessary code, test code and user interfaces. The final project documentation is also completed within this segment.

Outputs: Functioning System, Test Results, Documentation

Results: The functioning system is now ready for user acceptance testing and deployment.

Deployment

Actions: Backup and Recovery Planning, Installation, Testing

Overview: This segment involves installing the system on the appropriate hardware and integrating it with any cooperating systems. Backup and recovery plan are created and the system undergoes final testing in the production environment.

Outputs: Backup and Recovery Plan, Installed System, Test Results

Results: The system is now deployed. At this point a project review will be conducted with the client. In addition, an investigation of how Bizresolve's Managed Services can assist the client may also be undertaken.

In the Spotlight

Project: 193123 CMS

Objectives: Rapidly develop a CMS to manage content for the 193123 infrastructure.

Constraints: Tight budget and timeframe

Process Outputs: High-level Specification, ERD, Use Cases, White Site Prototyping

Deliverables: CMS System, Training & Help Documentation

Timeframe: 5 weeks

Project Resources: 1.5

Client Overview

[193123](#) is a music industry solution, operated by the leading digital aggregator [Soundbuzz](#), to sell mobile content from a variety of labels including [Sony BMG](#) and [Warner Music](#). The 193123 suite of sites are developed and operated for a diverse array of companies such as [JB HI-FI](#), [Big W](#), [Supre](#), [So Fresh](#) and [Ripit](#).

Project Details

Given the tight deadlines and Bizresolve's prior knowledge of the system, the analysis and design phase for this project was kept to a minimum.

This project consisted of the development of a new content management system for the [193123](#) websites to provide easier administration and maintenance of the public websites. With a much more intuitive and easy to use interface for the administrators, this has been very warmly received by the website operators, [Soundbuzz](#). Some of the latest technologies such as AJAX have been employed to increase usability and to speed up the administration process.

Technical Details

The project was implemented with the following technologies:

- J2EE, Struts, JDBC, XML
- SQL Server
- JSP, HTML, AJAX, DHTML, JavaScript
- Jboss 4 (utilising JAAS security model)
- Apache 2
- Windows XP